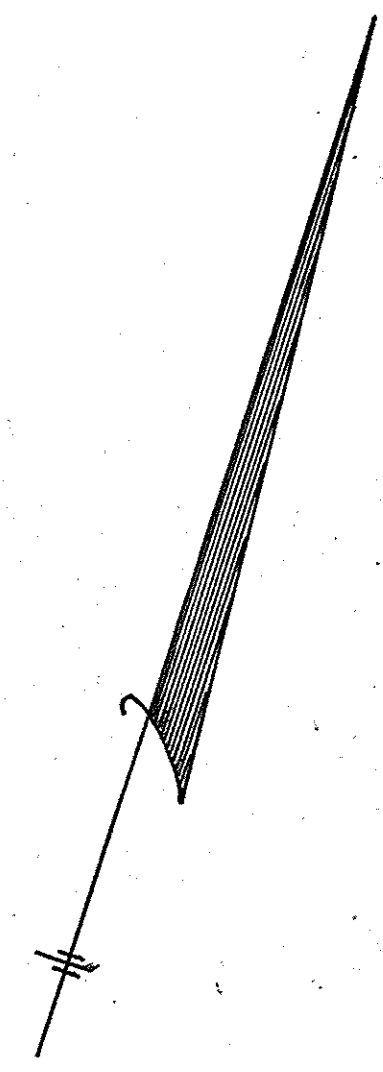
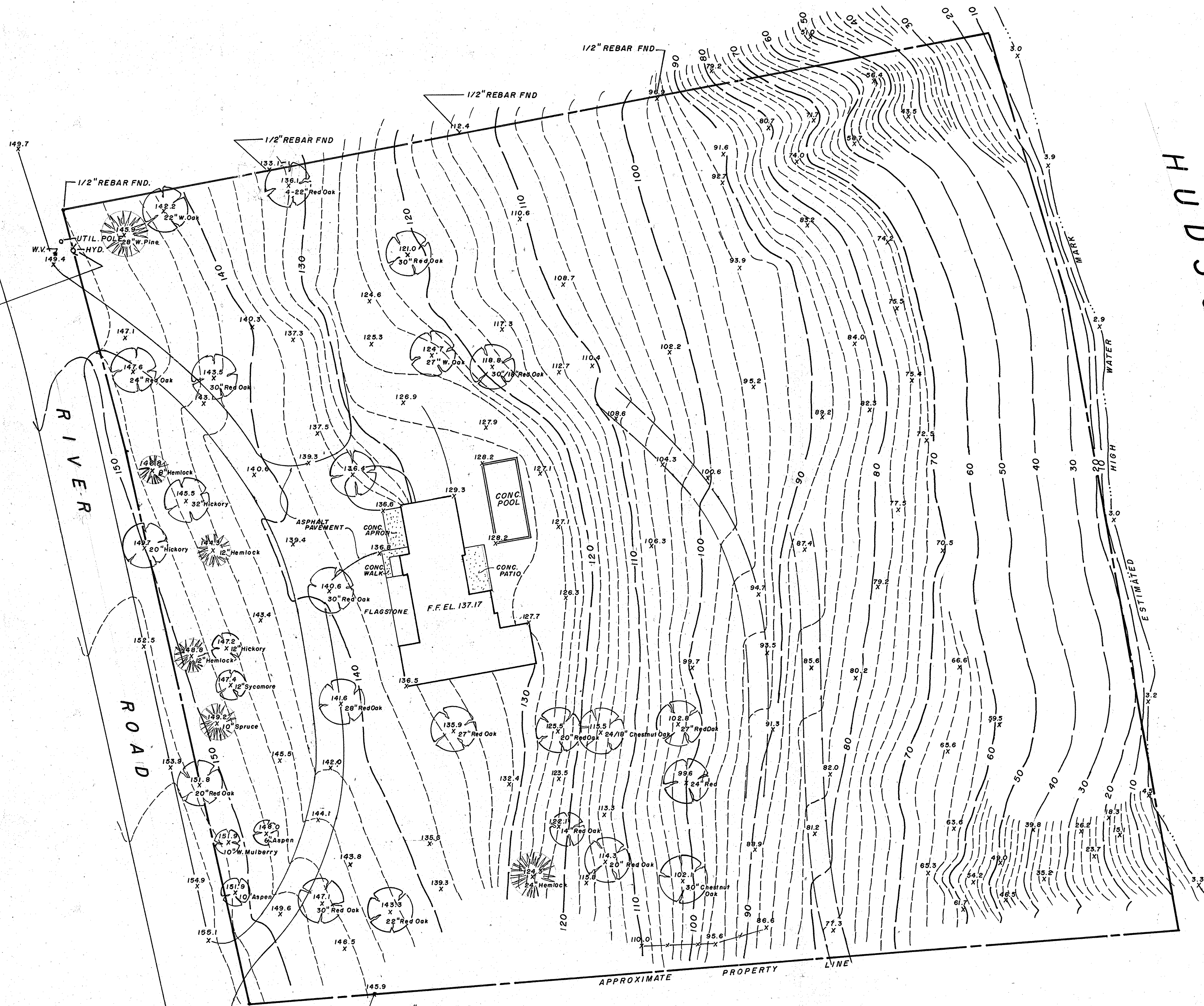


BENCHMARK
TOP OF FLANGE
ON "OPEN"
ELEV. 151.40



NOTE: VERTICAL DATUM REFERENCED TO USC & G.S. DATUM
BASED UPON DATA PROVIDED BY BRINNIER & LARIOS, P.C.

TOPOGRAPHIC SURVEY
FOR
DOUGLAS DENOFF
OF LANDS SITUATE IN THE
TOWN OF ESOPUS, ULSTER CO., N.Y.
SCALE: 1" = 20' CONTOUR INTERVAL: 2'

PREPARED BY:

Thomas R. Milo 13 July 2005
THOMAS R. MILO, N.Y.P.L.S. No. 49633

No.	DATE	REVISIONS		DRAWING No.
		DESCRIPTION		
				1 OF 1
THOMAS R. MILO Professional Land Surveyor				PROJECT No. 2005.4